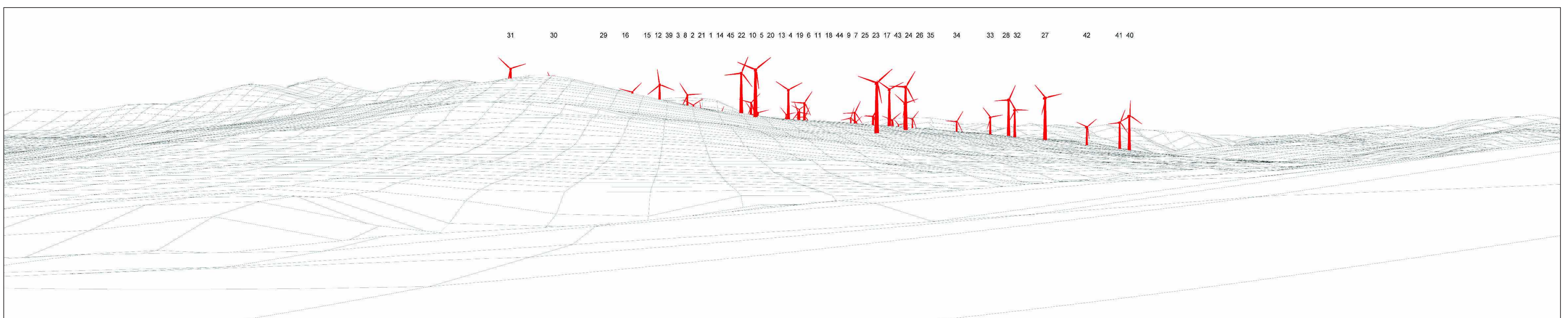


view from B7000 near Arndarroch



Existing view from B7000 near Arndarroch



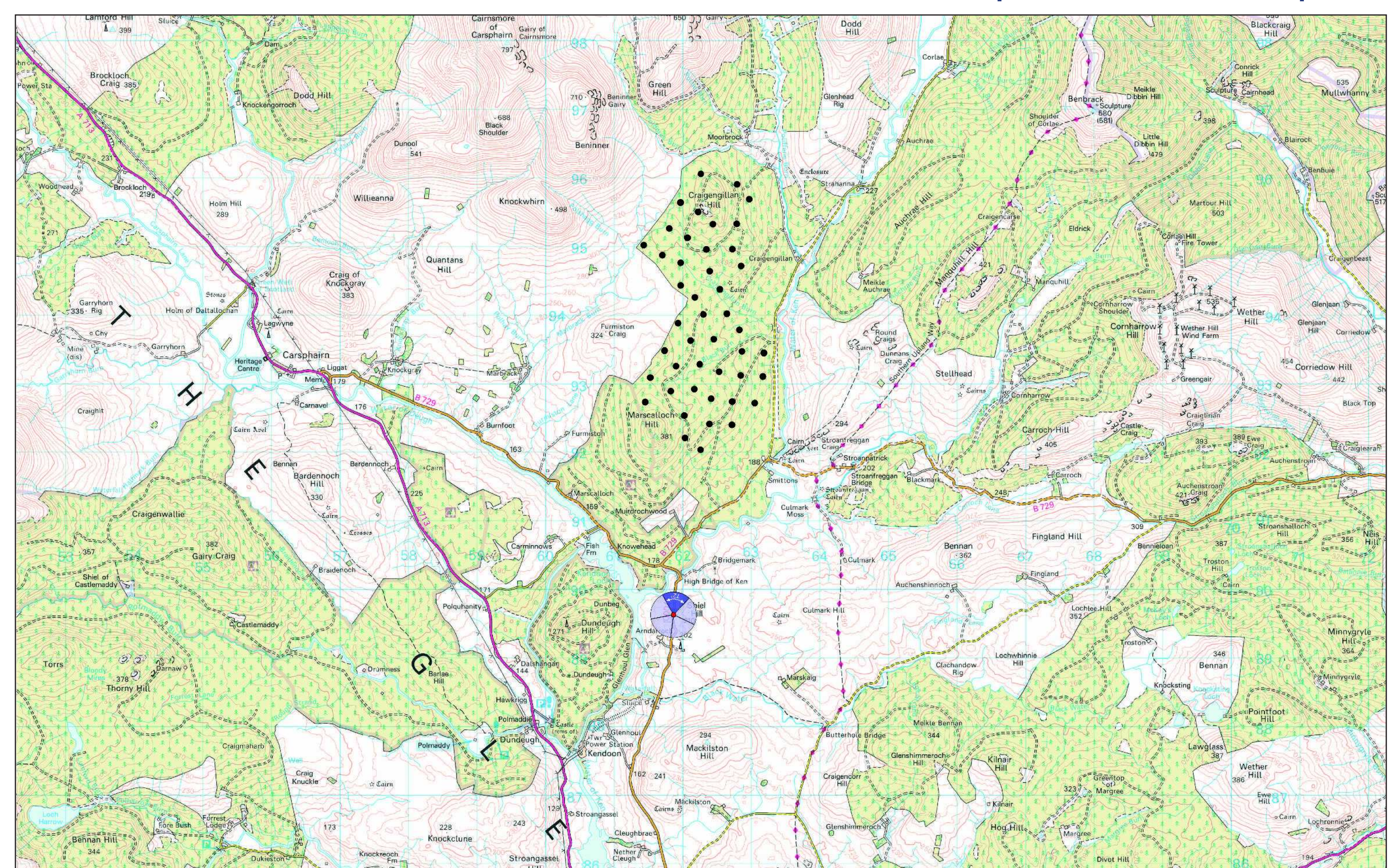
Computer generated wireline showing Shepherds' Rig Wind Farm in red



Photomontage view from B7000 near Arndarroch showing Shepherds' Rig Wind Farm

- Viewpoint Grid Reference - E261864 N589630
- View Direction - 5°
- Viewpoint Elevation - 185m AOD
- Horizontal Field of View - 72°
- Nearest Proposed Turbine - 2.4km
- Viewing Distance - 55cm
- Date and Time of Photo - 08.07.2013, 15:30pm

Viewpoint location plan



Wireline: While the landform and the curvature of the earth are taken into account, no features such as trees or buildings, which might otherwise obscure the views, are accounted for in the wirelines

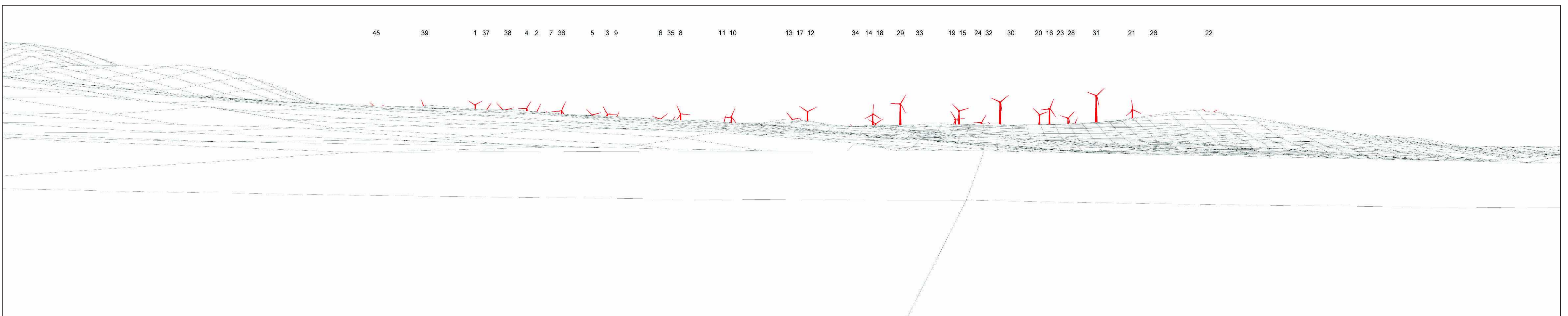
Note: Visualisations can give an impression of the appearance of a landscape and proposed wind farm. However, neither photographs or visualisations can convey a view exactly as it would be seen by the human eye in reality.



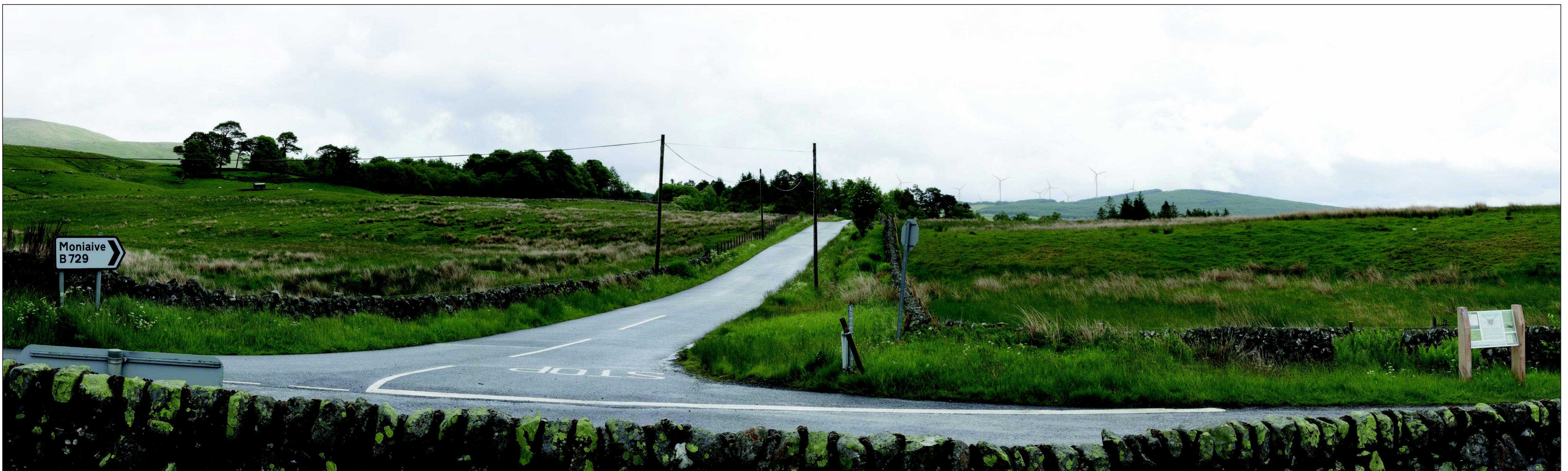
view from southeast of Carsphairn (junction of A713 & B729)



Existing view from southeast of Carsphairn



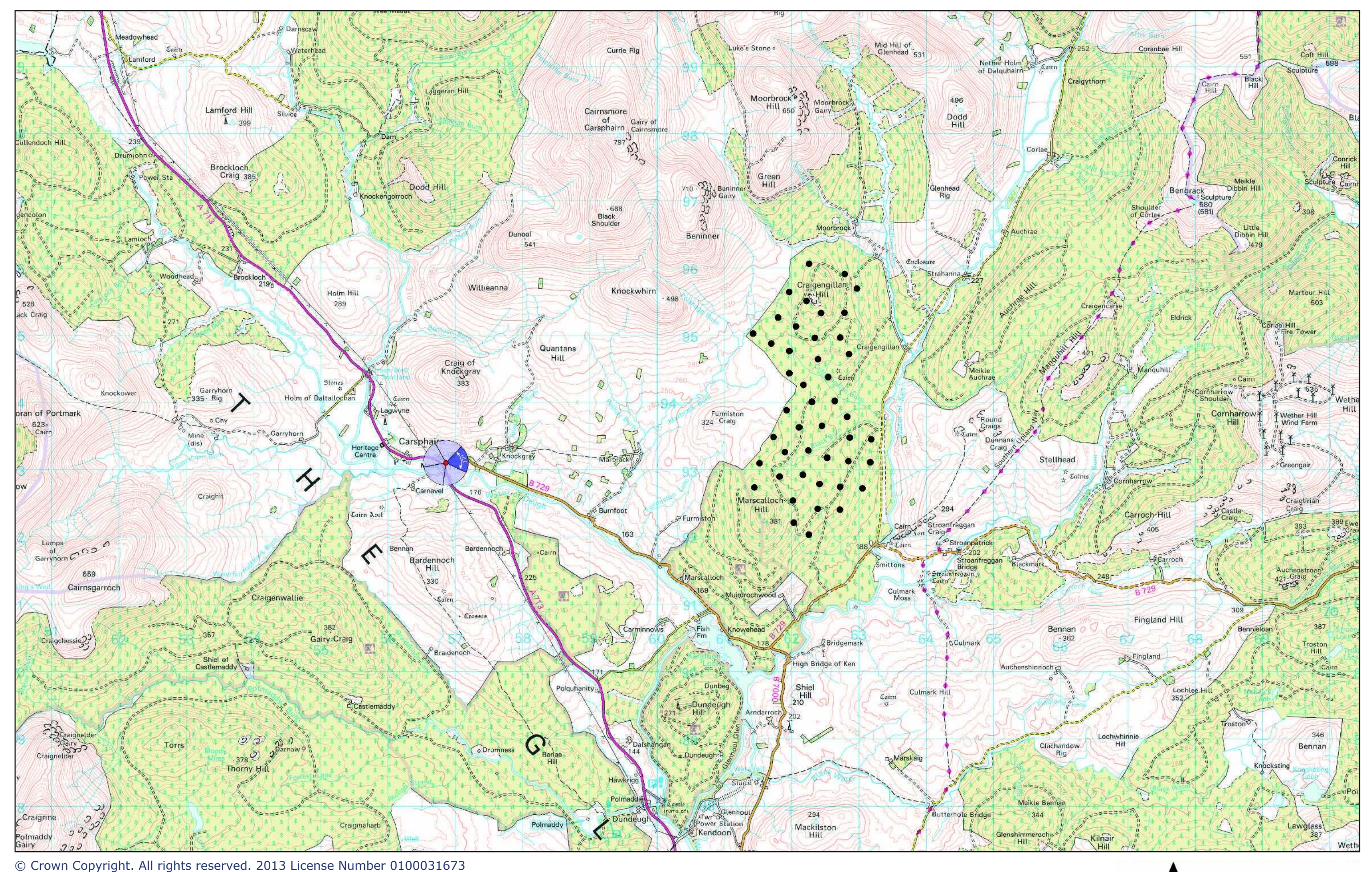
Computer generated wireline showing Shepherds' Rig Wind Farm in red



Photomontage view from southeast of Carsphairn showing Shepherds' Rig Wind Farm

- Viewpoint Grid Reference - E256861 N593099
- View Direction - 80°
- Viewpoint Elevation - 183m AOD
- Horizontal Field of View - 72°
- Nearest Proposed Turbine - 4.6km
- Viewing Distance - 55cm
- Date and Time of Photo - 15.06.2013, 11:30am

Viewpoint location plan



Wireline: While the landform and the curvature of the earth are taken into account, no features such as trees or buildings, which might otherwise obscure the views, are accounted for in the wirelines

Note: Visualisations can give an impression of the appearance of a landscape and proposed wind farm. However, neither photographs or visualisations can convey a view exactly as it would be seen by the human eye in reality.