

KEY:
 Proposed Shepherds' Rig Wind Farm
 Operational Schemes
 Consented / Under Construction Schemes
 Schemes in Planning

Wireline Drawing
 AEI II Figure 2.12 (sheet A)
 Viewpoint 11: B7000 north of East Arndarroch
 SHEPHERDS' RIG WIND FARM

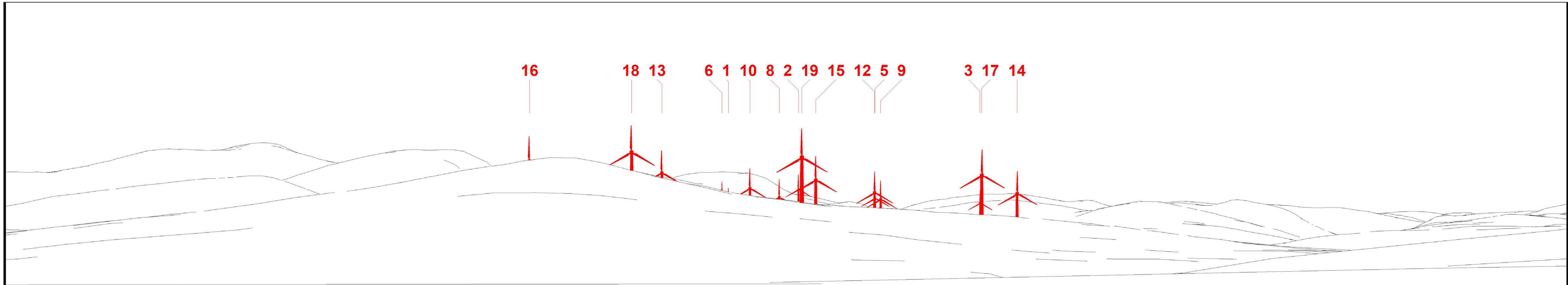


Viewpoint Information
 OS Reference: E 261845 N 589285
 Ground level: 199m (AOD)

Distance to nearest turbine: 3123m (T19)
Bearing to centre of photograph: 3.1°

Angle of view: 90° (cylindrical)
Principal distance: 500mm

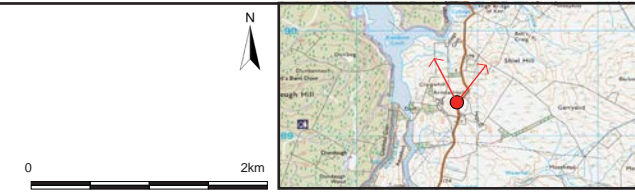
Camera: Canon EOS 5D Mark III
Lens: 50mm Fixed Focal Lens
Height: 1.5m
Date & Time: 23/05/2018 12:08



Wireline Drawing

KEY:
Proposed Shepherds' Rig Wind Farm

AEI II Figure 2.12 (sheet B)
Viewpoint 11: B7000 north of East Arndarroch
SHEPHERDS' RIG WIND FARM



Viewpoint Information
OS Reference: E 261845 N 589285
Ground level: 199m (AOD)

Distance to nearest turbine: 3123m (T19)
Bearing to centre of photograph: 3.1°

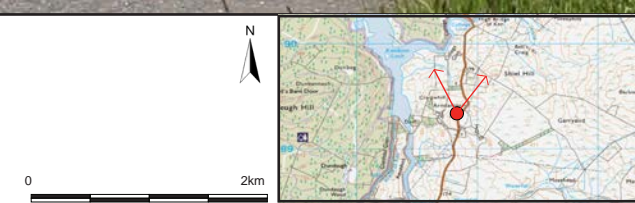
Angle of view: 53.5° (planar)
Principal distance: 812.5mm
Paper size: 841 x 297 mm (half A1)
Correct printed image size: 820 x 260mm

Camera: Canon EOS 5D Mark III
Lens: 50mm Fixed Focal Lens
Height: 1.5m
Date & Time: 23/05/2018 12:08



Photomontage (showing baseline with proposed scheme only)

AEI II Figure 2.12 (sheet C)
Viewpoint 11: B7000 north of East Arndarroch
SHEPHERDS' RIG WIND FARM



Viewpoint Information
OS Reference: E 261845 N 589285
Ground level: 199m (AOD)

Distance to nearest turbine: 3123m (T19)
Bearing to centre of photograph: 3.1°

Angle of view: 53.5° (planar)
Principal distance: 812.5mm
Paper size: 841 x 297 mm (half A1)
Correct printed image size: 820 x 260mm

Camera: Canon EOS 5D Mark III
Lens: 50mm Fixed Focal Lens
Height: 1.5m
Date & Time: 23/05/2018 12:08