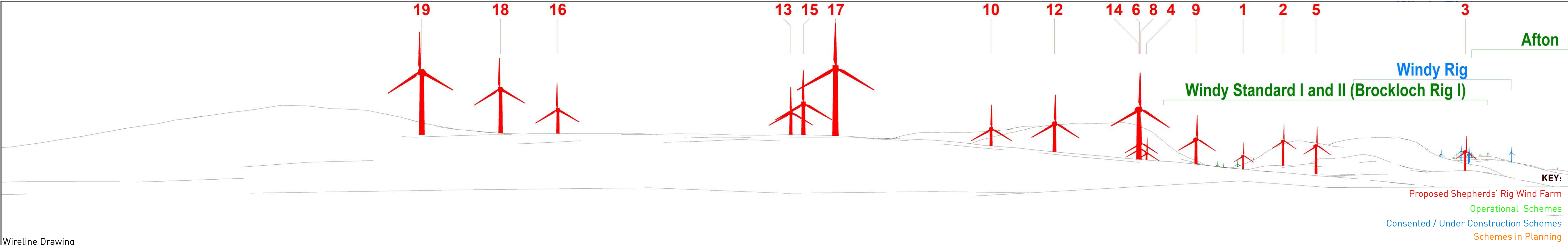


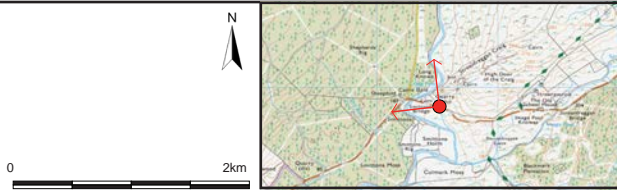


Baseline Photograph



Wireline Drawing

AEI II Figure 2.5 (sheet A)
Viewpoint 4: Smittons Bridge
SHEPHERDS' RIG WIND FARM

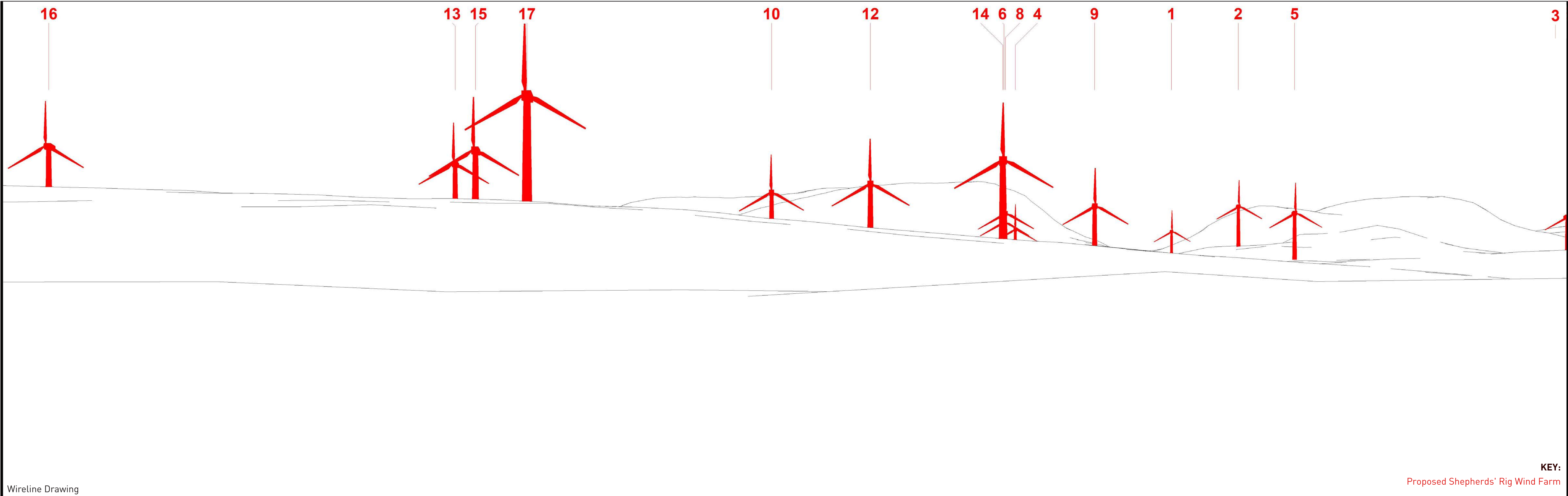


Viewpoint Information
OS Reference: E 263406 N 591856
Ground level: 187m (AOD)

Distance to nearest turbine: 1320m (T17)
Bearing to centre of photograph: 312.7°

Angle of view: 90° (cylindrical)
Principal distance: 500mm

Camera: Canon EOS 5D Mark III
Lens: 50mm Fixed Focal Lens
Height: 1.5m
Date & Time: 24/05/2018 08:54

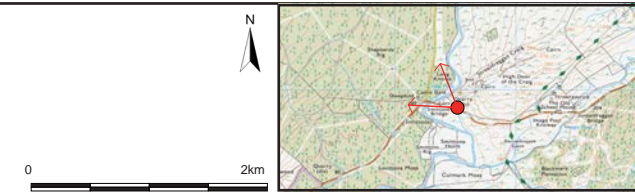


Wireline Drawing

KEY:

Proposed Shepherds' Rig Wind Farm

AEI II Figure 2.5 (sheet B)
Viewpoint 4: Smittons Bridge
SHEPHERDS' RIG WIND FARM



Viewpoint Information
OS Reference: E 263406 N 591856
Ground level: 187m (AOD)

Distance to nearest turbine: 1320m (T17)
Bearing to centre of photograph: 325°

Angle of view: 53.5° (planar)
Principal distance: 812.5mm
Paper size: 841 x 297 mm (half A1)
Correct printed image size: 820 x 260mm

Camera: Canon EOS 5D Mark III
Lens: 50mm Fixed Focal Lens
Height: 1.5m
Date & Time: 24/05/2018 08:54



Photomontage (showing baseline with proposed scheme only)

AEI II Figure 2.5 (sheet C)
Viewpoint 4: Smittons Bridge
SHEPHERDS' RIG WIND FARM

INFINERGY

ARCUS

Pegasus Group



Viewpoint Information
OS Reference: E 263406 N 591856
Ground level: 187m (AOD)

Distance to nearest turbine: 1320m (T17)
Bearing to centre of photograph: 325°

Angle of view: 53.5° (planar)
Principal distance: 812.5mm
Paper size: 841 x 297 mm (half A1)
Correct printed image size: 820 x 260mm

Camera: Canon EOS 5D Mark III
Lens: 50mm Fixed Focal Lens
Height: 1.5m
Date & Time: 24/05/2018 08:54