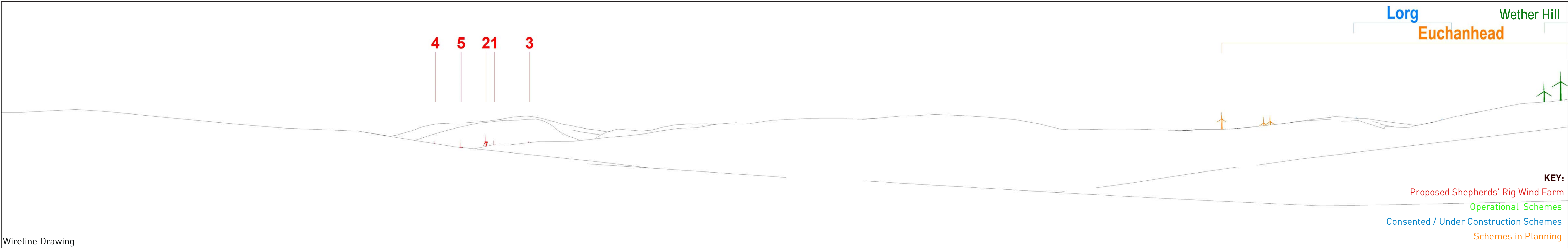


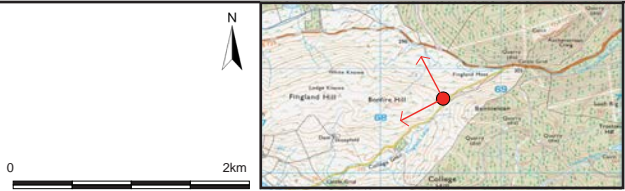


Baseline Photograph



Wireline Drawing

AEI II Figure 2.9 (sheet A)
Viewpoint 8: Minor Road South of B729
SHEPHERDS' RIG WIND FARM

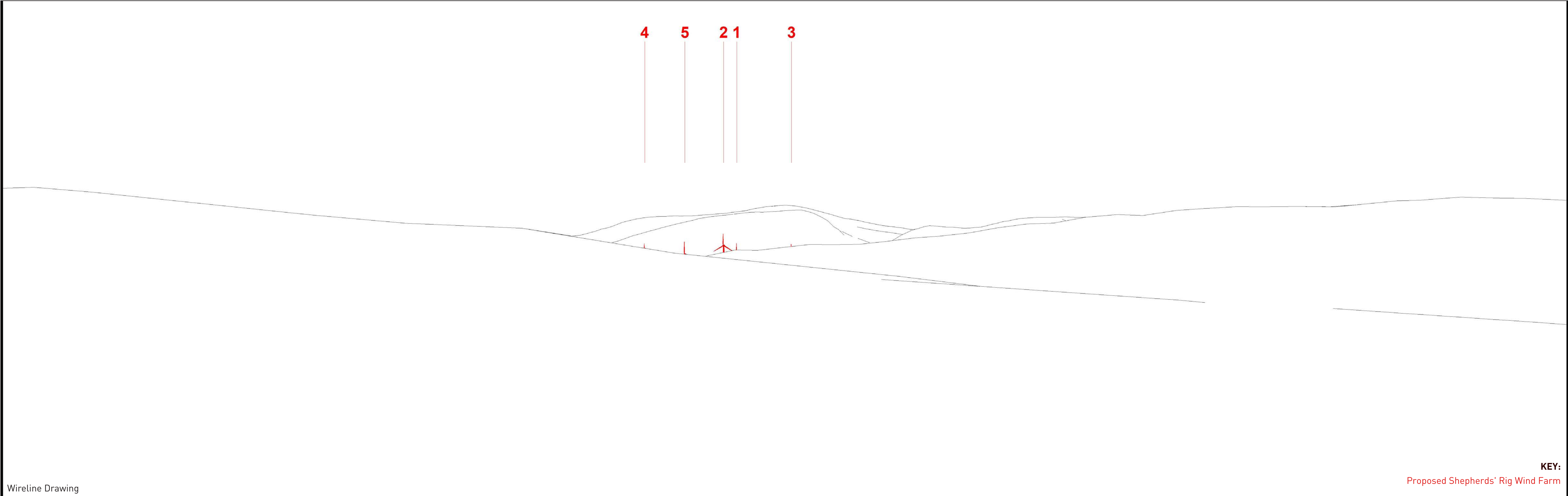


Viewpoint Information
OS Reference: E 268509 N 590654
Ground level: 331m (AOD)

Distance to nearest turbine: 6397m (T17)
Bearing to centre of photograph: 323.9°

Angle of view: 90° [cylindrical]
Principal distance: 500mm

Camera: Canon EOS 5D Mark III
Lens: 50mm Fixed Focal Lens
Height: 1.5m
Date & Time: 23/05/2018 14:49



Wireline Drawing

KEY:

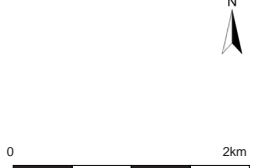
Proposed Shepherds' Rig Wind Farm

AEI II Figure 2.9 (sheet B)
Viewpoint 8: Minor Road South of B729
SHEPHERDS' RIG WIND FARM

INFINERGY

ARCUS

Pegasus
Group



Viewpoint Information
OS Reference: E 268509 N 590654
Ground level: 331m (AOD)

Distance to nearest turbine: 6397m (T17)
Bearing to centre of photograph: 309°

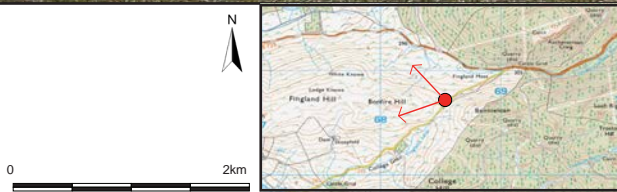
Angle of view: 53.5° (planar)
Principal distance: 812.5mm
Paper size: 841 x 297 mm (half A1)
Correct printed image size: 820 x 260mm

Camera: Canon EOS 5D Mark III
Lens: 50mm Fixed Focal Lens
Height: 1.5m
Date & Time: 23/05/2018 14:49



Photomontage [showing baseline with proposed scheme only]

AEI II Figure 2.9 (sheet C)
Viewpoint 8: Minor Road South of B729
SHEPHERDS' RIG WIND FARM



Viewpoint Information
OS Reference: E 268509 N 590654
Ground level: 331m (AOD)

Distance to nearest turbine: 6397m (T17)
Bearing to centre of photograph: 309°

Angle of view: 53.5° (planar)
Principal distance: 812.5mm
Paper size: 841 x 297 mm (half A1)
Correct printed image size: 820 x 260mm

Camera: Canon EOS 5D Mark III
Lens: 50mm Fixed Focal Lens
Height: 1.5m
Date & Time: 23/05/2018 14:49