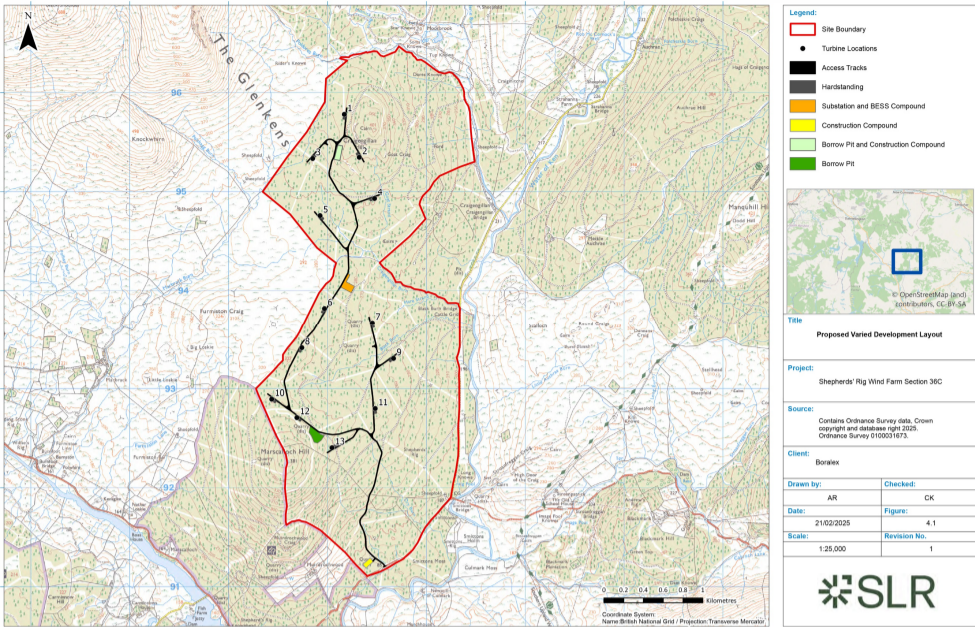


# THE PROPOSED VARIED DEVELOPMENT



**Boralex is currently developing a proposal to vary the consented Shepherds' Rig Wind Farm which gained consent in August 2023.**

The Site remains the same as that of the Consented Development, located approximately 5 km to the east of Carsphairn and comprises commercial coniferous woodland plantation, bounded to the north and north-east by further forestry and to the west, east and south-east by open moorland.

At this advanced stage of the assessment and design, the variations being considered include:

- Removal of four turbines and associated crane hard standings;
- Increase in the maximum blade tip height of the remaining 13 turbines to 200 m.
- Relocation of five turbines slightly beyond the micro-siting allowance;
- Amendments to part of the track layout to reflect turbine removal and relocation;
- Increase in the size and capacity of the associated Battery Energy Storage System (BESS) from 6 MW to 50 MW;
- Incorporation of additional biodiversity enhancement areas including forest to bog restoration and native riparian planting; and
- Increase in the period of consent from 30 to 40 years.

The locations of eight of the proposed turbines are unchanged from (or are within the micro-siting allowance of) the Consented Development positions, with the locations of the remaining five turbines only slightly adjusted to incorporate the constraints associated with larger turbines.

The total maximum generating capacity is anticipated to be in the region of 81 MW, 10.8 MW more than the Consented Development, but with a 60% greater energy yield, subject to final turbine model selection.

The Consented Development included a 6 MW BESS and it is intended to increase this to 50 MW of storage in the variation scheme. The BESS would store electricity from the wind turbines when there is excess generation and feed this into the electricity network when there is a deficit, and it is most needed. This will help to make the electricity system more efficient and flexible.

The BESS would be located in the same location as for the Consented Development, at the southern end of the wind farm substation, although taking up a larger footprint to accommodate its increased capacity. The dimensions of the compound would be approximately 120 m by 70 m. The main part of the facility is likely to consist of battery storage units housed in containers. There would be invertors and transformers serving each set of containers.

Fire detection and suppression systems would be installed within the facility. The maximum height of any structure within the facility is likely to be approximately 3 m. The only lighting would be motion sensor activated lighting on containers and units within the facility.

The associated infrastructure still includes on-site access tracks, turbine foundations and crane hard standings, two temporary borrow pits, a substation and control building compound, on-site underground cabling, a temporary construction compound and a temporary concrete batching plant.

Turbine tip heights of up to 200 metres (656 feet) are being proposed to reduce the number of turbines on the site whilst increasing the amount of green energy able to be produced.

